



10 Thurlow Close, Highams Park, London, E4 9XE

Guide Price £225,000

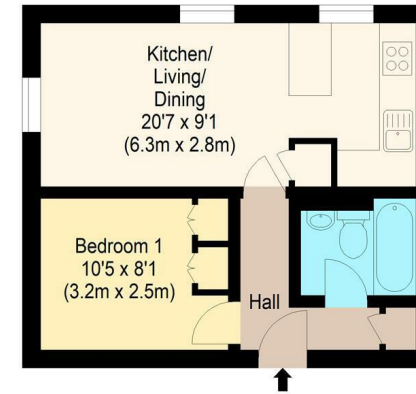
1 Bedrooms / 1 Receptions / 1 Bathrooms

360.00 sq ft

Apartment

Council Tax Band: B

Local Authority:



Ground Floor

william rose
Thurlow Close, E4

Approximate Gross Internal Floor Area : 33.48 sq m / 360 sq ft



Measured according to RICS IPMS2. Floor plan is for illustrative purposes only and is not to scale. Every attempt has been made to ensure the accuracy of the floor plan shown, however all measurements, fixtures, fittings and data shown are an approximate interpretation for illustrative purposes only. 1 sq m = 10.76 sq feet.

Date: 23/5/2024



Key Features:

- 1 Bedroom flat
- Purpose built
- Ground floor
- Quiet location
- Allocated parking space
- Secure entry system
- Communal garden
- Close to station
- Chain free
- Long lease



Energy Efficiency Rating		
	Current	Potential
Very energy efficient - lower running costs		
(92 plus) A		
(81-91) B		
(69-80) C		77
(55-68) D		
(39-54) E	49	
(21-38) F		
(1-20) G		
Not energy efficient - higher running costs		
England & Wales		
EU Directive 2002/91/EC		

